

### Specifications

Nominal Voltage	12V	
Nominal Capacity (10HR)	200AH	
Dimension	Length	522mm (20.55 inches)
	Width	240mm (9.45 inches)
	Height	218mm (8.58 inches)
	Total Height (with Terminal)	224mm (8.81 inches)
	Approximate Weight	61.0 kg (134.5 lbs)
Battery Type	Valve Regulated Lead-Acid Battery, AGM Design	
Terminal Type	IT	
Rated Capacity	208.0AH	(20hr, 1.80V/cell, 25°C/77°F)
	200.0AH	(10hr, 1.80V/cell, 25°C/77°F)
	172.5AH	(5hr, 1.75V/cell, 25°C/77°F)
	156.0AH	(3hr, 1.75V/cell, 25°C/77°F)
	122.0AH	(1hr, 1.60V/cell, 25°C/77°F)
Max. Discharge Current	2000A	
Internal Resistance	2.7mΩ	
Operating Temp. Range	Discharge:	-20°C (-4°F)~50°C (122°F)
	Charge:	-20°C (-4°F)~50°C (122°F)
	Storage:	-20°C (-4°F)~40°C (104°F)
Nominal Operating Temp. Range	25±3°C (77±5°F)	
Container Material	ABS (Option: 94-HB & 94-V0 flame retardant case)	
Capacity affected by Temperature	40°C (104°F)	103%
	25°C (77°F)	100%
	0°C (32°F)	86%
Self Discharge	SigmasTek SP series batteries may be stored for up to 6 months at 25°C (77°F) and then a freshening charge is recommended. For higher temperatures the time interval will be shorter.	



### Applications

- Uninterruptible Power Supply (UPS)
- Electric wheelchairs, scooters, bikes
- Electronic apparatus and equipment
- Alarm and security systems
- Emergency first responder equipment
- Emergency lighting
- Medical devices
- Electric carts
- Telecom equipment
- Switchgear
- Solar power systems



### Constant Current Discharge (Amperes Per Battery) at 25°C (77°F)

F.V. (V/cell) \ Discharge Time	10min	15min	30min	1h	2h	3h	5h	6h	8h	10h	20h
1.60V	476.4	366.7	216.0	122.0	75.1	57.5	37.3	32.0	25.1	21.0	10.9
1.65V	444.4	342.9	204.6	117.8	72.7	55.8	36.3	31.3	24.7	20.8	10.8
1.70V	411.8	322.5	196.4	114.0	70.7	53.5	35.3	30.6	24.2	20.4	10.7
1.75V	377.8	302.0	189.2	110.5	68.0	52.0	34.5	30.0	23.8	20.2	10.5
1.80V	343.9	282.4	179.5	105.6	65.5	50.6	33.6	29.2	23.4	20.0	10.4
1.85V	278.4	240.0	154.8	94.30	60.1	46.2	31.3	27.2	22.1	18.9	10.3

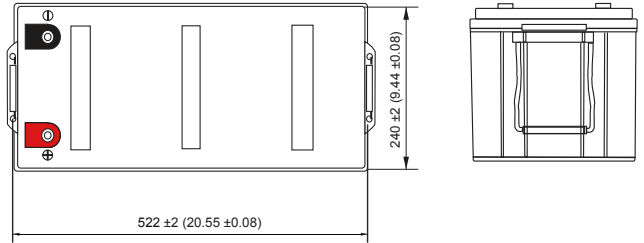
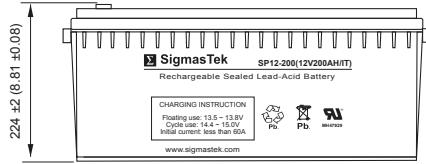
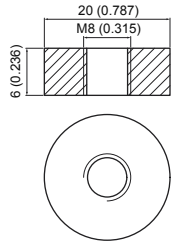
### Constant Power Discharge (Watts Per Cell) at 25°C (77°F)

F.V. (V/cell) \ Discharge Time	10min	15min	30min	1h	2h	3h	5h	6h	8h	10h	20h
1.60V	809.8	641.7	393.8	229.4	142.5	109.8	72.0	61.9	49.0	41.4	21.5
1.65V	773.1	610.1	375.7	222.7	138.5	107.0	70.2	60.8	48.4	41.0	21.4
1.70V	723.0	578.2	363.5	217.0	135.6	103.1	68.6	59.7	47.4	40.2	21.1
1.75V	678.7	549.2	352.2	211.0	130.6	100.5	67.2	58.6	46.8	39.9	20.7
1.80V	627.7	519.9	336.9	202.6	126.4	98.10	65.5	57.2	46.1	39.5	20.6
1.85V	514.3	447.8	295.0	181.9	116.6	90.10	61.3	53.5	43.6	37.4	20.4

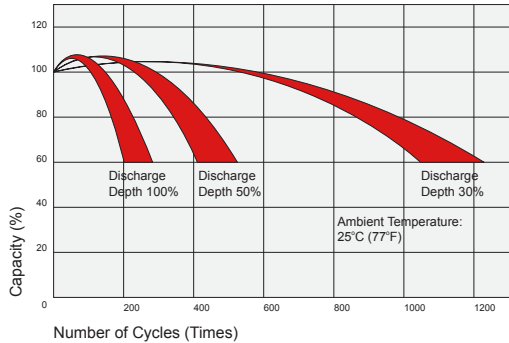
## Dimensions

### IT Terminal

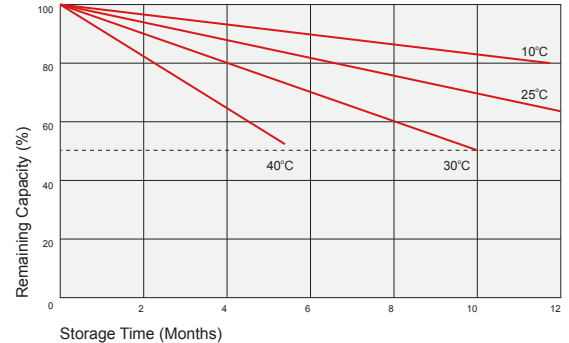
Unit: mm (inches)



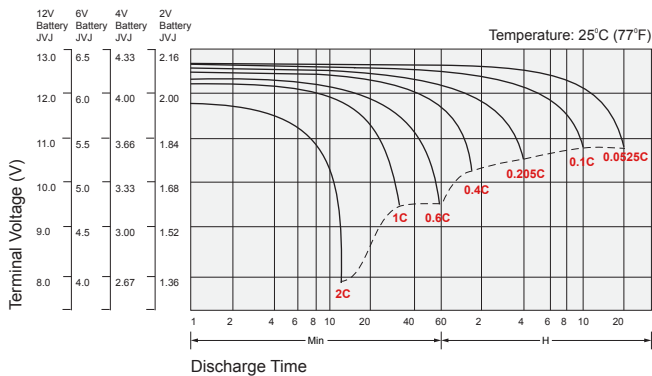
## Cycle Service Life



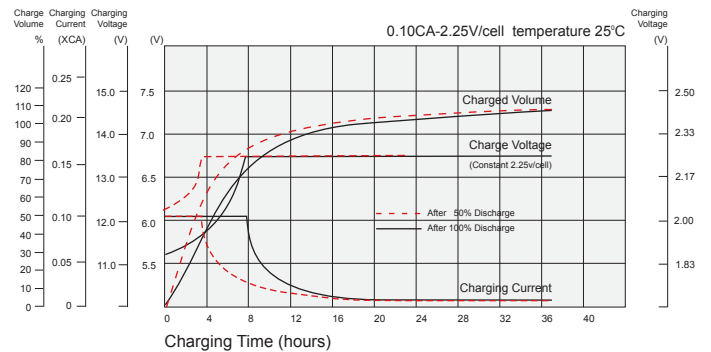
## Self Discharge Characteristics



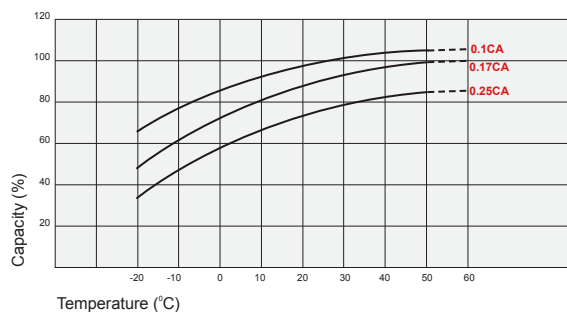
## Discharge Characteristics



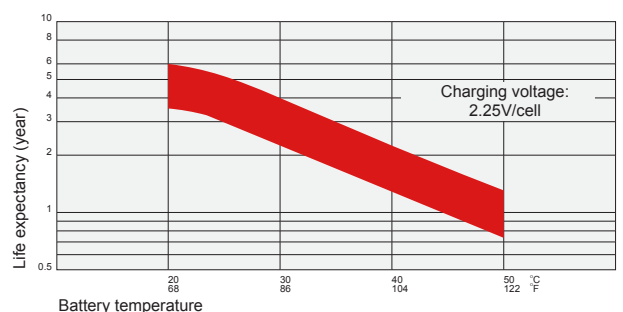
## Float Charging Characteristics



## Temperature Effects in Relation to Battery Capacity



## Temperature Effects on Long Term Float Life



## Contact Information

SigmasTek  
7651 W 100th Place  
Bridgeview, IL 60455, USA

T: (888) 988-8290  
www.sigmastek.com  
order@sigmastek.com